

Pinch Control Valve 7079

with integrated positioner

1/2" up to 2"

New generation of pinch control valves with revised inner tube for demanding applications or food fluids.

- Compact design with rotatable actuator
- Unaffected by contaminated, granulated, viscous, doughy and aggressive media
- Usable for sanitary and aseptic applications because of hygienic sealing
- All components in contact with the fluid made of 316L
- Integrated positioner
 - pneumatic
 - electropneumatic
 - digital



Technical Information

Nominal Sizes	1/2" up to 2"
Connections	Pipe threads nach ISO 228-1 G 1/2" up to G 2", NPT-treats Inner sticking socket PVC Welding ends acc. to DIN or ISO Tri-Clamp-connector (inch)
Body material	Stainless steel CF8M, no contact with the fluid
Material in contact with the fluid	Sainless steel 316L (except cement socket PVC)
Operating pressure	0 - 87 psi
Media	Liquids, gases, suspensions, granulate or limestone
Fluid Temperature	Tube material NBR (FDA): 14°F up to 176°F (short-duration, steam +266°F*)
	Tube material FKM: 14°F up to 266°F
	Tube material EPDM (FDA): 14°F up to 203°F (short-duration, steam +266°F*)
	Tube material Silikon: -40°F up to +320°F
	Tube material SBR: -22°F up to +176°F
Ambient temperature	5°F up to 140°F

*short-duration rise of temperature only when the valve is fully open

Positioner

For technical data of the positioner please see the corresponding datasheets.

Pinch Control Valve 7079



with integrated positioner

Selection of tube quality

Permissible media temperature

	EPDM	NBR	Viton	Silicon	SBR
T max °F	203	176	266	320	176
T min °F	-22	-4	14	-40	-22

Resistance*

	EPDM	NBR	VITON	Silicon	SBR
Wastewater	A	A	A	A	A
Ammonia (liquid)	A	B	C	C	B
Ammonia (gaseous)	A	B	C	C	B
Malic acid	B	A	A	B	B
Brake fluid	A	C	C	C	B
Benzine	C	B	A	C	B
Beer	A	A	A	A	C
Bleach liquor	A	C	A	C	C
Butter	B	A	A	B	C
Buttermilk	B	C	A	A	C
Chlorine	B	C	A	C	C
Saturated steam	A	C	B	B	C
Diesel	C	A	A	C	C
Peanut oil	C	A	A	A	C
Vinegar	A	B	B	A	C
Greases (from animals/plants)	C	A	A	B	C
Fatty acids	C	B	A	B	C
Fish oil	B	A	A	A	C
Fruit juices	A	A	A	A	C
Milk of lime	B	B	B	C	A
Cocoa butter	C	C	A	C	C
Carbonic acid	A	A	A	B	C
Coconut oil	C	A	A	A	C
Air with solid particles	B	B	C	C	A
Corn oil	C	A	A	B	C
Margarine	C	A	A	B	C
Caustic soda	A	B	B	B	C
Nut oil	C	A	A	A	C
Rapeseed oil	A	B	A	C	C
Water with solid particles	B	B	C	C	A
Detergent	A	A	A	A	C
Citric acid	A	A	A	A	C

*In the case of information on resistance, this is only a recommendation, errors and omissions excepted (no liability accepted)

A: suitable / resistant B: conditionally suitable C: not suitable

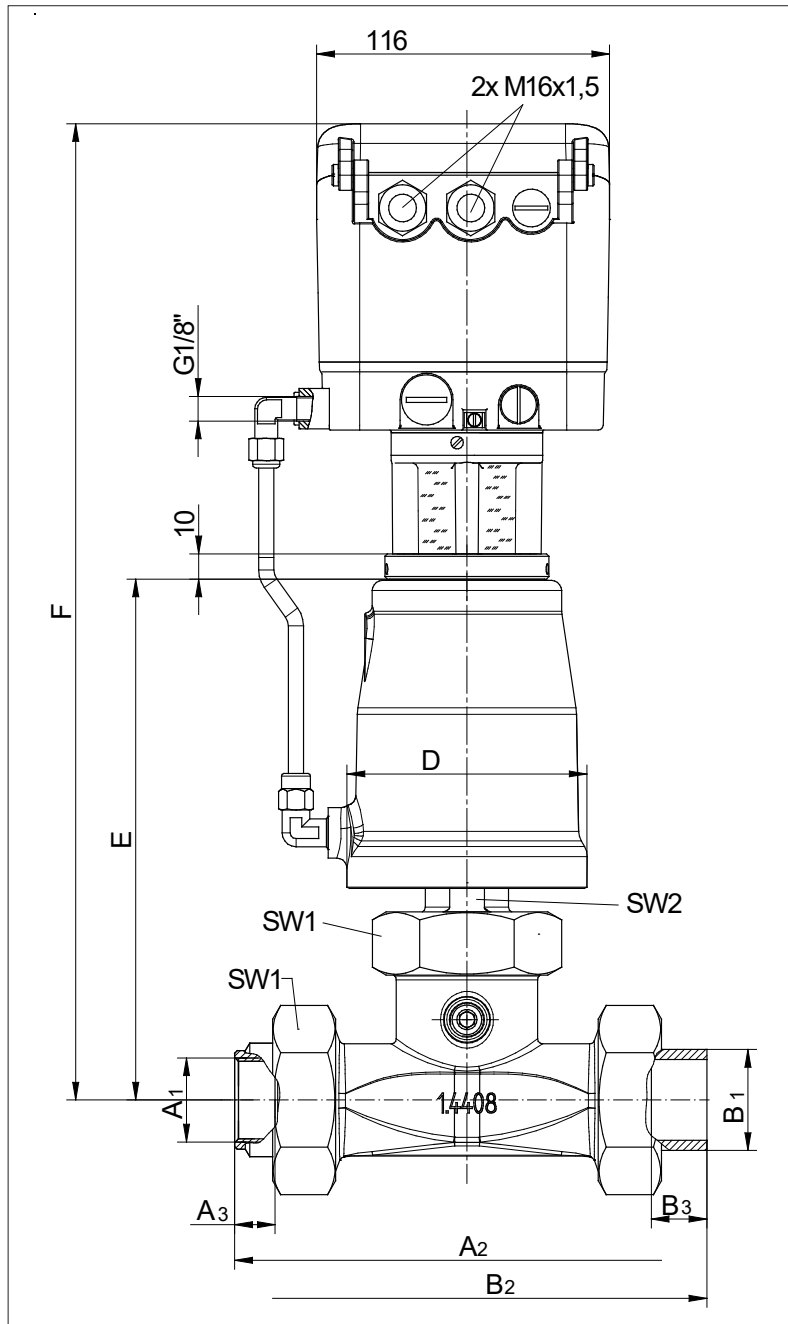
Approvals

	EPDM	NBR	Viton	Silicon	SBR
FDA	x	x		x	
BfR	x	x		x	
EG 1935/2004/CE	x			x	
USP cl. VI				x	
EN ISO 3861					x

Pinch Control Valve 7079

with integrated positioner

Dimensions and Weights with threaded connection or inner sticking sockets



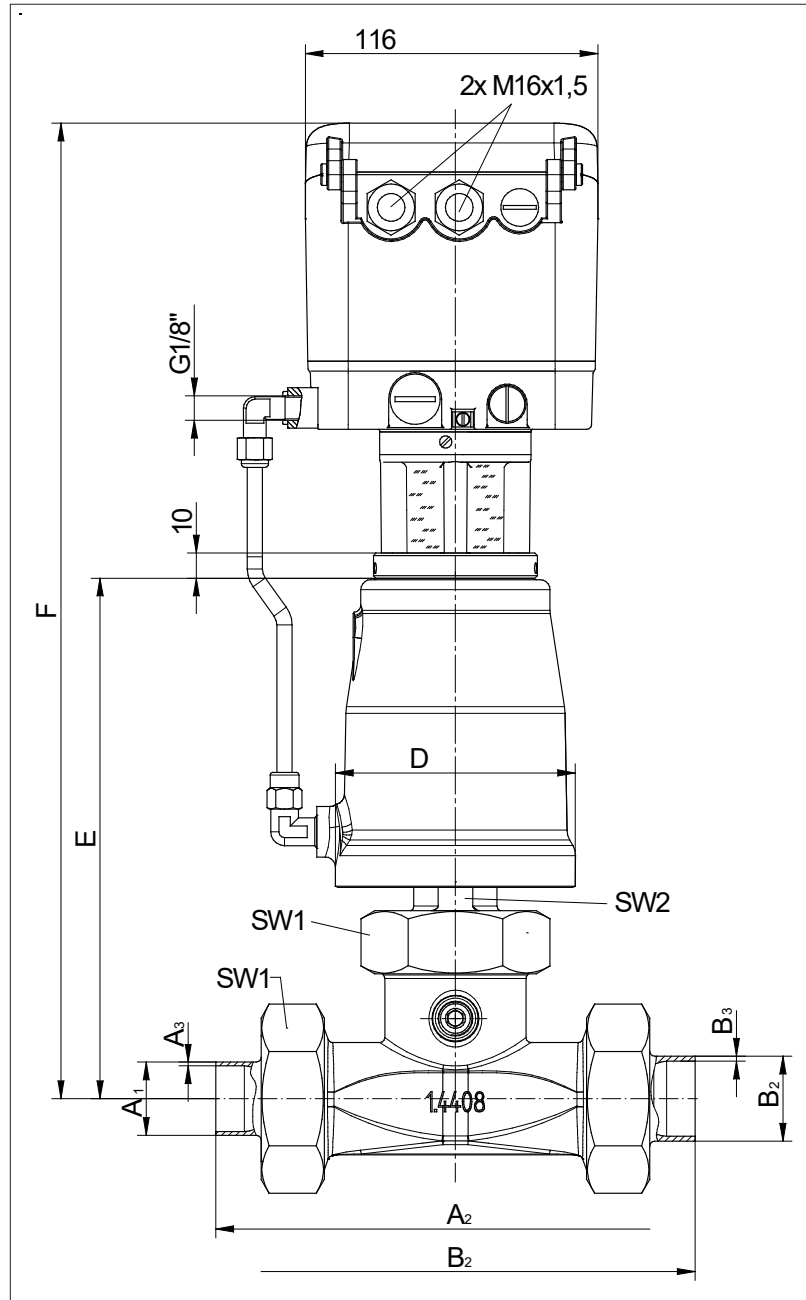
DN	Piston	Whitworth pipe thread			NPT-thread			Cement socket PVC			D	E	F	G	I	SW1	SW2	Stroke	Cvs-Value	Weight lbs
		A1	A2	A3	A1	A2	A3	B1	B2	B3										
1/2"	3"	Rp 1/2"	5.1	0.5	NPT 1/2"	5.2	0.6	0.8	5.1	0.6	3.9	7.2	14.1	G1/4"	3.5	1.8	1.1	0.6	14.5	11.2
3/4"	3"	Rp 3/4"	5.2	0.5	NPT 3/4"	5.2	0.6	1	5.4	0.7	3.9	7.2	14.1	G1/4"	3.5	1.8	1.1	0.6	14.5	11.9
1"	3"	Rp 1"	7.2	0.6	NPT 1"	7.2	0.7	1.3	7.5	0.9	3.9	8.5	15.4	G1/4"	3.5	2.6	1.2	0.9	27.7	14.1
1 1/4"	3"	Rp 1 1/4"	7.5	0.6	NPT 1 1/4"	7.6	0.7	1.6	7.9	1	3.9	8.5	15.4	G1/4"	3.5	2.6	1.2	0.9	27.7	14.1
1 1/2"	3"	Rp 1 1/2"	9.7	0.8	NPT 1 1/2"	9.7	0.7	2	10.1	1.2	3.9	9.4	16.4	G1/4"	3.5	3.5	1.2	1	97.1	20.5
1 1/2"	5"	Rp 1 1/2"	9.7	0.8	NPT 1 1/2"	9.7	0.7	2	10.1	1.2	5.7	10.4	17.3	G1/4"	4.1	3.5	1.2	1	97.1	25.1
2"	3"	Rp 2"	9.7	0.9	NPT 2"	9.7	0.7	2.5	10.7	1.5	3.9	9.4	16.4	G1/4"	3.5	3.5	1.2	1	97.1	21.2
2"	5"	Rp 2"	9.7	0.9	NPT 2"	9.7	0.7	2.5	10.7	1.5	5.7	10.4	17.3	G1/4"	4.1	3.5	1.2	1	97.1	25.8

Dimensions in inch

Pinch Control Valve 7079

with integrated positioner

Dimensions and Weights with welding ends



Text and pictures are not binding. We reserve the right to alter the equipment.

DN	Piston	Welding ends acc. to DIN			Welding ends acc. to ISO			D	E	F	G	I	SW1	SW2	Stroke	Cvs-value	Weight [lbs]
		A1	A2	A3	A1	A2	A3										
1/2"	3"	0.7	5.1	0.1	0.8	5.1	0.1	3.9	7.2	14.1	G1/4"	3.5	1.8	1.1	0.6	14.5	11.2
3/4"	3"	0.9	5.1	0.1	1.1	5.1	0.1	3.9	7.2	14.1	G1/4"	3.5	1.8	1.1	0.6		11.9
1"	3"	1.1	7.5	0.1	1.3	7.5	0.1	3.9	8.5	15.4	G1/4"	3.5	2.6	1.2	0.9	27.7	14.1
1 1/4"	3"	1.3	7.5	0.1	1.7	7.5	0.1	3.9	8.5	15.4	G1/4"	3.5	2.6	1.2	0.9		14.1
1 1/2"	3"	1.6	9.8	0.1	1.9	9.8	0.1	3.9	9.4	16.4	G1/4"	3.5	3.5	1.2	1	97.1	20.5
1 1/2"	5"	1.6	9.8	0.1	1.9	9.8	0.1	5.7	10.4	17.3	G1/4"	4.1	3.5	1.2	1		25.1
2"	3"	2.1	9.8	0.1	2.4	9.8	0.1	3.9	9.4	16.4	G1/4"	3.5	3.5	1.2	1		21.2
2"	5"	2.1	9.8	0.1	2.4	9.8	0.1	5.7	10.4	17.3	G1/4"	4.1	3.5	1.2	1		25.8

Dimensions in inch