



621/622 SERIES

- Vacuum and compound ranges through 0 psig to 15,000 psig; absolute ranges from 0 psia to 15 psia through 0 psia to 100 psia
- Current and voltage outputs available
- 316 Stainless Steel and Elgiloy wetted parts
- CE compliant to suppress RFI, EMI and ESD
- NACE MR0175/ISO 15156 compliant
- ANSI/ISA-12.27.01 approved single seal

APPLICATIONS

- Chemical processing
- Gas pressure measurement
- Oil field & offshore
- Mining
- Well head measurement

NOSHOK 621 and 622 Series transmitters are Factory Mutual and Canadian Standards Association approved for use in hazardous location applications as follows:

Explosion-proof with entity approved for: Class I, Division 1, Groups A, B, C and D. Dust Ignition-proof with entity approval for class II/III, Division 1, Groups E, F and G. Maximum electrical ratings 30V, 20 mA.

CE compliant with pressure equipment directive 2014/68/EU.

ANSI/ISA-12.27.01, Approved single seal.

SPECIFICATIONS

Output signals	4 mA to 20 mA, 2-wire; 1 Vdc to 5 Vdc, 3-wire; 0.5 Vdc to 4.5 Vdc, 3-wire	
Pressure ranges	Vacuum through 0 psi to 15,000 psi Absolute from 0 psia to 15 psia through 0 psia to 100 psia	
Accuracy	±0.25% full scale (BFSL) (Includes the effects of non-linearity, hysteresis, non-repeatability, zero point and full scale errors)	
Stability	≤±0.2% full scale for 1 year, non-accumulating	
Response time	≤1 ms (between 10% and 90% full scale)	
Service life	>100,000,000 load cycles	
Temperature ranges	Compensated	32 °F to 176 °F (0 °C to 80 °C)
	Zero effect	±0.011% full scale/ °F
	Span effect	±0.011% full scale/ °F
	Media	T6: -40 °F to 131 °F (-40 °C to 55 °C) T5: -40 °F to 158 °F (-40 °C to 70 °C) T4: -40 °F to 212 °F (-40 °C to 100 °C)
	Ambient	T6: -40 °F to 140 °F (-40 °C to 60 °C) T5: -40 °F to 167 °F (-40 °C to 75 °C) T4: -40 °F to 221 °F (-40 °C to 105 °C)
	Storage	-40 °F to 221 °F (-40 °C to 105 °C)
Power requirement*	10 Vdc to 30 Vdc (4 mA to 20 mA, 2-wire) 6 Vdc to 30 Vdc (1 Vdc to 5 Vdc, 3-wire) 5 Vdc to 30 Vdc (0.5 Vdc to 4.5 Vdc, 3-wire) 14 Vdc to 30 Vdc (0 Vdc to 10 Vdc, 3-wire)	
Load limitations	≤ (VPower-10)/0.020 Amp for 4 mA to 20 mA ≥ 10,000 Ω for 1 Vdc to 5 Vdc, 3-wire	
Proof pressure	3 times full scale for ranges 0 psi to 15 psi through 0 psi to 200 psi 1.75 times full scale for ranges 0 psi to 300 psi through 0 psi to 10,000 psi 1.5 times full scale for 0 psi to 15,000 psi	
Burst pressure	3.8 times full scale for ranges 0 psi to 15 psi through 0 psi to 200 psi 4 times full scale for ranges 0 psi to 300 psi through 0 psi to 10,000 psi 3 times full scale for 0 psi to 15,000 psi	
Measuring element	621 Series is 316 Stainless Steel for ranges up through 0 psi to 300 psi, 316 Stainless Steel with Elgiloy ranges 0 psig to 500 psig and higher; 622 Series is 316 Stainless Steel with NBR o-ring; (FKM o-ring optional)	
Connection	316 Stainless Steel	
Housing material	316 Stainless Steel	
Environmental rating	IP67/NEMA 4x	
Electromagnetic rating	CE compliant to EMC norm EN 61326:2014/A1:1998 RFI, EMI and ESD protection	
Electrical protection	Reverse polarity, over-voltage and short circuit protected	
Shock	1,000 g's according to IEC 60068-2-27	
Vibration	20 g's according to IEC 60068-2-6	
Weight	Approximately 12 oz.	

* Unregulated



WARNING: This product can expose you to chemicals including Lead and Nickel, which are known to the State of California to cause cancer and birth defects or other reproductive harm. For more information go to www.P65Warnings.ca.gov

ORDERING INFORMATION				
SERIES	621	Stainless Steel threaded connection	622	316 Stainless Steel flush diaphragm
PRESSURE RANGES	30vac	-30 inHg to 0 psig	5	0 psig to 5 psig
	30/30	-30 inHg to 30 psig	10	0 psig to 10 psig
	30/60	-30 inHg to 60 psig	15	0 psig to 15 psig
	30/100	-30 inHg to 100 psig	30	0 psig to 30 psig
	30/160	-30 inHg to 160 psig	60	0 psig to 60 psig
	30/200	-30 inHg to 200 psig	100	0 psig to 100 psig
	30/300	-30 inHg to 300 psig	200	0 psig to 200 psig
		psig = gauge pressure psia = absolute pressure	Other ranges available on request	
ACCURACY	1	±0.25% full scale (BFSL)		
OUTPUT SIGNALS	1	4 mA to 20 mA, 2-wire	3	1 Vdc to 5 Vdc, 3-wire, low power
	2	0 Vdc to 5 Vdc, 3-wire	5	0 Vdc to 10 Vdc, 3-wire
PROCESS CONNECTIONS	2	1/4" NPT male	11	G 1/2 B *
	8	1/2" NPT male	13	G 1 B (622 Series only, <30 psig)
ELECTRICAL CONNECTIONS	6	1/2" NPT male conduit with 6' integral cable	37	1/2" NPT male conduit with 6' flying leads with epoxy seal
OPTIONS	ST8	Threaded Orifice (621 Series only)	20	20' Cable/lead (attached to electrical connection 6 or 37)
			30	30' Cable/lead (attached to electrical connection 6 or 37)

Please consult your local NOSHOK Distributor or NOSHOK, Inc. for availability and delivery information.

* 621 series G1/2B, 622 Series G 1/2 B Flush (≥30 psig).

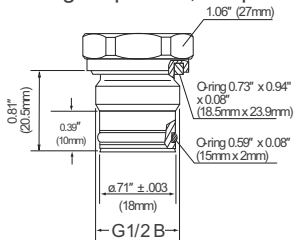
EXAMPLE

Series 621 Series
 Pressure range 0 psig to 500 psig
 Accuracy ±0.25% full scale (BFSL)
 Output signal 4 mA to 20 mA, 2-wire
 Process connection 1/2" NPT Male
 Electrical connection 1/2" NPT Male conduit with 6' integral cable
 Option Threaded Orifice

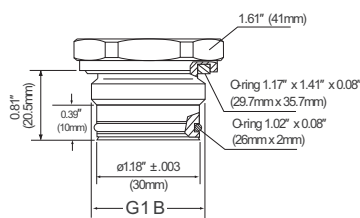
621 - 500 - 1 - 1 - 8 - 6 - ST8

Front flush process connections

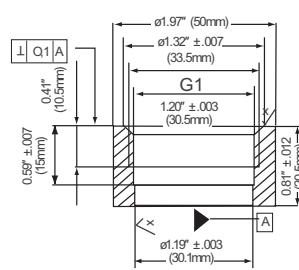
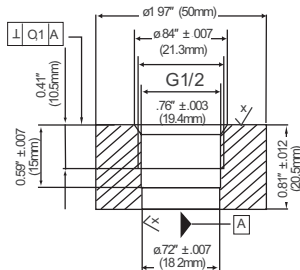
For ranges 0 psi to 30 psi through 0 psi to 8,000 psi



For ranges 0 to 30 psi and below



Flush corresponding port weld-on adapters



2-WIRE WIRING

V+	Red
V-	Black
Ground	Gray

3-WIRE WIRING

V+	Red
Common	Black
Output	Brown
Ground	Gray